

ENFUSE
minerals
Natural Aromatherapy Mineral Makeup



Pressed. Loose. Round. Square.
Black. Silver. Paper or Plastic...

you choose!

About ENFUSE Minerals

Naturally derived minerals — this complete make-up line is actually good for all skin types, even the most sensitive. Offering a full line of innovative products from loose and pressed foundations, blushers to stunning lip and eye colors. No talc, mineral oil, harsh chemicals or dyes are used in our crushed minerals.

We've been using mineral make-up at Charlene Lyn Esthetics for 5 years and recommend it to all our clients for its numerous benefits. We find that more often than not, once our clients try mineral make-up, they're happy with the way the minerals feel and look on their skin. We used our knowledge and feedback from clients to expand ENFUSE minerals Make-Up from a small line-up of loose foundation to a full selection of products.

We initially began using minerals to ease skin redness in clients following chemical peels and microdermabrasion treatments, and found that once their skin had healed, they wanted to continue using mineral make-up because it doesn't feel heavy on the skin, and amazingly lasts all day without being re-touched, a big bonus!

Unlike conventional make-up, mineral make-up is actually good for the skin and contains only pure, natural ingredients with anti-inflammatory and anti-microbial properties. While we *always* recommend that you remove your make-up before you go to bed, if you fall asleep with your make up on, it won't harm your skin – thanks to the large molecules in mineral make-up that stay on the surface of the skin and aren't absorbed.

Because the mineral make-up stays on the skin's surface it acts as a barrier and actually protects from pollution and environmental damage, providing a natural SPF 20. Mineral make-up is inert, so doesn't harbor bacteria, making it the ideal solution if you suffer with acne – providing excellent coverage that won't make the problem worse.

What's in it?

Our pure mineral powders, foundations, blushers and eye shadows are made from skin-healthy ingredients, Mica, Titanium Dioxide, Zinc Oxide and pharmaceutical grade vitamins A, D and E and lavender-based aromatherapy. The mineral powders are suitable for all skin types and shades, ages and conditions. Anti-microbial and anti-inflammatory properties make these products ideal for rosacea and acne prone skin.



Why use mineral makeup?

Our products are gentle enough to cover redness after chemical peels or microdermabrasion procedures.

Preferred by professional make-up artists, as our products have great staying power, do not run under harsh lighting, and are healthy for the skin. Minerals are non-comedogenic, oil-free and water resistant making them the ideal solution for those with active lifestyles, (mineral make-up is popular with many actors and politicians), or if you are troubled by menopausal flushes, acne, rosacea or uneven pigmentation. There are no harmful chemicals, talc, dyes, alcohol, perfume, parabens or fillers. As our mineral products contain only skin-healthy ingredients, the products are interchangeable and can be used anywhere on the face for beautiful custom colors. Try using your blusher as an eye shadow or, with the application of a clear gloss, on the lips for a shade that perfectly complements your blusher.

How do you apply it?

Make certain your face is dry and that any moisturizer has been absorbed into the skin. First apply your choice of concealer to any areas of concern.

Apply the foundation with either a Luscious Kabuki brush for natural coverage, a Powder Dome for very light coverage –suitable for medium to dark skins who need light application a few times rather than one heavier application or a Capra Purse brush for extra coverage on areas of concern like broken veins or rosacea – tap off any excess powder.

Start on the forehead and work the powder into the skin in small circular motions over the whole face, including eyelids and lips and blend toward the neck. Can be used lightly on ears to reduce any redness.

If the skin becomes moist due to perspiration, blot gently with a tissue to remove excess moisture – DO NOT RUB or you will remove the powder from your face.

Don't forget that you can use the foundation, blusher and eye shadow anywhere on your face or body. Foundations can also be used as blush, contour or highlight, blush can be used as eye shadow or lipstick, eye shadow can be used as eyeliner, etc.

mineral foundation



pump brush silver



Compact and convenient this refillable magnetic mini-wallet hold a foundation with a quick touch up sponge.



mini wallet

piggy back jars



pump brush black



application tip

Kabuki brushes are perfect for applying mineral makeup. Swirl it on the powder and buff it on your face.





Weightless mineral powder foundation contains natural mineral pigments, freeze-dried vitamins A & E, green tea extract and a light lavender based aromatherapy. Available pressed and loose.



oat powders

bronzer



***Oat powders** are translucent finishing powders, oil absorbing, pore minimizing and can be worn under or over the mineral foundations.*

***Touch of Sun** bronzer gives you that just back from the beach look.*



concealer

Camoufleur, our full pigmented paramedical cream concealer covers any skin imperfection. The Camouflage is a crème to powder formula, goes on creamy and turns to powder. The Mineral Powder Concealer is a natural pigment powder which works beautifully under the mineral foundation.

camoufleur



camouflage



application tip

Taklon Bristles work best for applying a creamy product. They are designed to release the product better than natural hair.

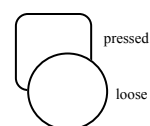




mineral blush



From subtle shades of mauve to bold berries, to shimmery soft pinks these blush powders always look and feel natural. Available pressed and loose.



mineral eyeshadow



Soft and natural or sassy and shiny, our highly pigmented eyeshadows come in a wide selection of shades. Can be used wet or dry. Available in matte and pearl as pressed or loose.

mascara



clear mascara/brow fix

This lengthening formula is designed to create long, natural looking lashes. Smoke is our black shade and Chocolate is the brown. Clear mascara is for dark lashes that don't need any more color, or you can use it to set your brows in place.

smoke



chocolate



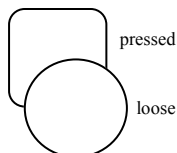
ENFUSE minerals



matte



pearl





brights



color



metallic



neutral



russets



smokey



application tip

Use an eye shadow brush for a lighter dusting of color, or dip a liner brush into the sealer then into the mineral gems and draw on a perfect vibrant line of sparkle!



eyeliner sealer

Eyeliner sealer adheres the mineral gems to the eyelid and makes the colors more vivid.

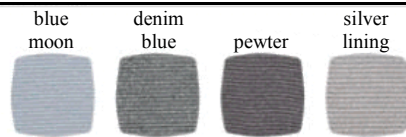




Four coordinated pressed mineral eyeshadows in a faux-croc paper compact in a drawstring organza bag. Choose from 8 different quads. Compact is available empty so you can design your own kit.

shadow quads

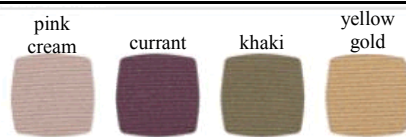
cool waters



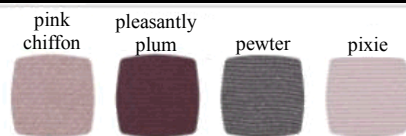
ny brownstone



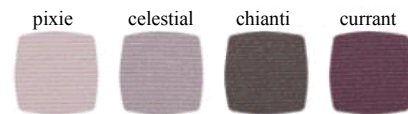
spring break



pretty cool



delicate collection



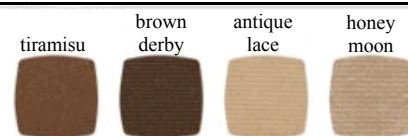
nouveau riche



the runway collection



brownie points





creme

cherry bomb	cherry on top	cosmic plum	fusion	grapevine
				
mousse	persimmon	plush rose	poppy	port
				
just coral	mango tango	marooned	midnight mauve	
				
spiceful	sunkissed	wild orchid		
				

ENFUSE minerals

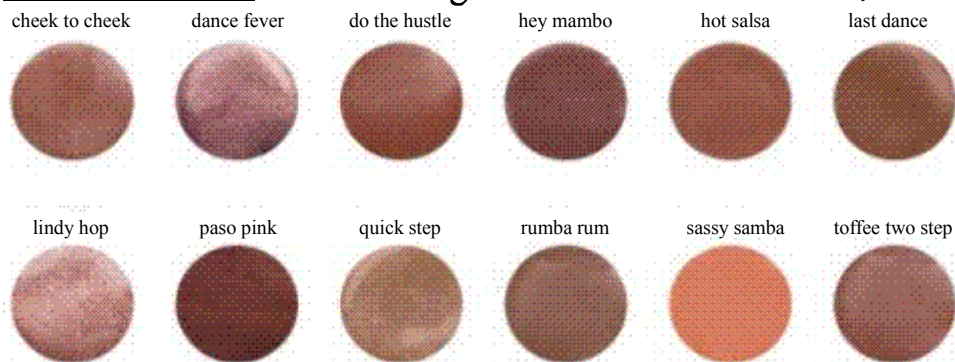


pearl



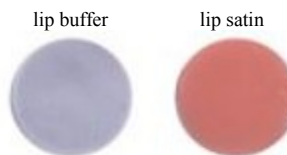
sheer

Let the light dance across your lips...



lip treatment

Our favorite one-two punch! **Lip Buffer** is a scrub for the lips. It exfoliates dry, chapped lips. The vitamin enriched **Lip Satin** moisturizes and protects the lips with sweet almond and jojoba oil.



application tip

Use a lip brush for a more professional finish.



lip polish



Short and sassy, our fabulous polish is so rich in color it looks like liquid lipstick.



accessories



Crystal Magic: Use under the eye area to soften fine lines. Apply eye cream/gel or concealer on top. This technically advanced formula will boost the effect of your eye cream/gel and optically softens the fine lines.



Satin Slip: This high anti-oxidant foundation primer is infused with vitamins A, D & E. Seals in moisture and leaves the skin satiny smooth. Perfect under mineral foundation.



quick dry
brush
cleaner



gentle
eye/lip
makeup
remover



hand
sanitizer

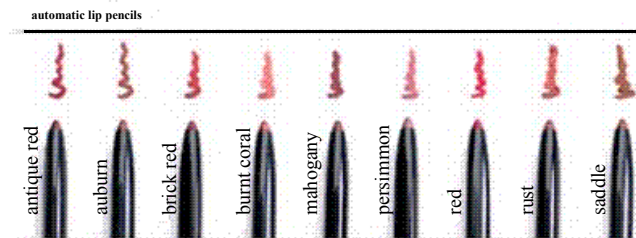
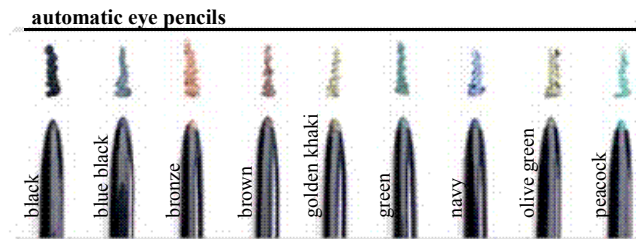
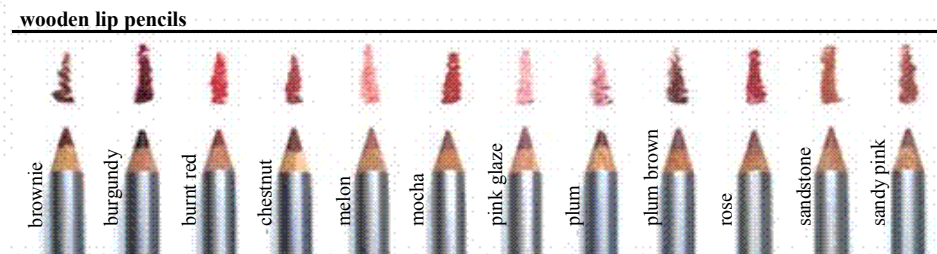
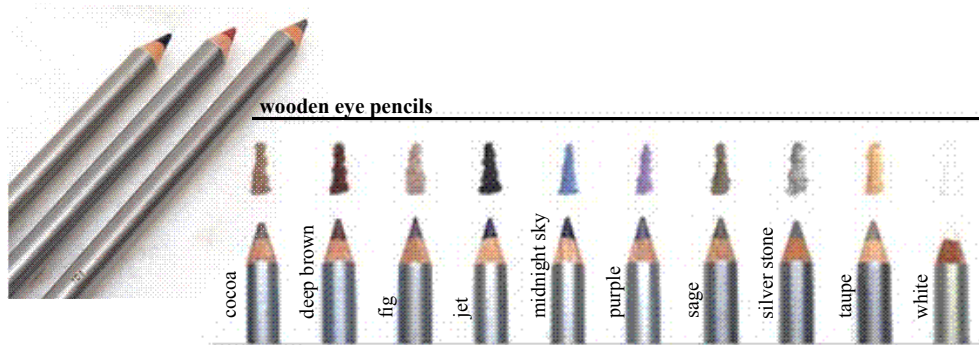
mineral mist—
mini and regular



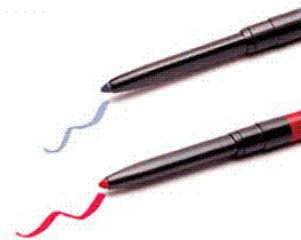


pencils

For the eyes or the lips, these highly pigmented pencils glide on and stay on all day.



You never need a sharpener with these Automatic Pencils. Just twist them up for a rich formula that goes on smoothly.



makeup wallets



*All the makeup you need in one
refillable, magnetic wallet! 6
different color combinations to
choose from. Also available empty
so you can customize it to fit your
specifications.*

fair	mauveous	aqua blast	candlelight	warm	terra cotta	brown sugar	tiramisu
	cool beige	terra cotta	pewter		cashmere	sorbet	honey moon
medium			flax	cool			mc creamy
deep	cedar	pebble	chianti	tawny	primrose	pixie	pink chiffon
	canvas	sherry	pink cream		sea shell	satin mauve	shiny wine
		pralines					ivy
	rouge glow	bark	taupe shimmer		ginger	try a papaya	penny lane
	iced coffee	garnet	yellow gold		tawny	maple leaf	honey moon
		onyx					bark



high brow kit



This gorgeous paper eyebrow kit has all the tools you'll need to maintain your brows at home. Includes deluxe mini tweezers, duo-ended sable brush, brow gel, 3 stencils and mineral brow powder. Comes in 6 different shades.



Gorgeous graphite paper—this empty palette allows you to customize your own kit. The well is deep enough to hold a pencil or a small brush.



showcase palette

good to go kit

The perfect mineral makeup starter kit. Inside this cute mesh and vinyl cosmetic bag is a: mini pressed foundation, loose foundation, loose bronzer, mini mineral mist, kabuki brush, cheekabuki brush and a convenient double-end camoufluff brush.

fair		medium	
cashmere	cool beige	seashell	canvas
			
deep		dark	
cocoa	iced coffee	sand dune	espresso
			



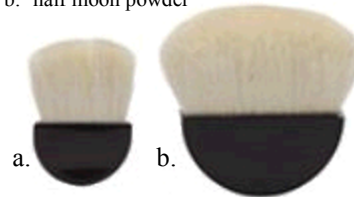


Kabukis



We have a great collection of Kabuki brushes. Our Luscious Kabuki is made with the finest and softest hair available. Domed or flat tops, with wooden handles or retractable... you choose.

- a. mini half moon
- b. half moon powder





The Titanium Collection consists of the finest hairs and bristles, the most popular head shapes and professional dowel handles. The Mini Collection is perfect for travel.



ENFUSE minerals



10 pc titanium collection in cylinder



8 pc titanium mini collection





Our top selling brushes from the Chisel and Conventional Collection. Kolinsky, Taklon, Capra, Goat and Sable hair.





Features and Benefits

- Natural micronized mineral pigments
- No harmful chemicals, talc, oil or alcohol
- Natural Pigments protect from harmful UVA & UVB rays
- Used by professionals for post-operative coverage
- Non-comedogenic & water –resistant
- Ideal post-microdermabrasion or facial peel, reduces redness & inflammation
- Anti-microbial properties discourage breakouts
- Light reflective—reduces the appearance of lines/wrinkles
- Very low sensitivity rate
- Covers, corrects and protects—better than traditional make-up
- Full line of products—exceptional colors and shades
- Minerals contain freeze-dried vitamins A, E & C and lavender based aromatherapy.



ENFUSE
minerals
Natural Aromatherapy Mineral Makeup

ENFUSE MINERALS



Charlene Lyn Esthetics

3942 Center Point Rd. NE
Cedar Rapids, IA 52402

Phone: 319.270.0146

Fax: 253.270.4868

E-mail: sherry@enfuseminerals.com